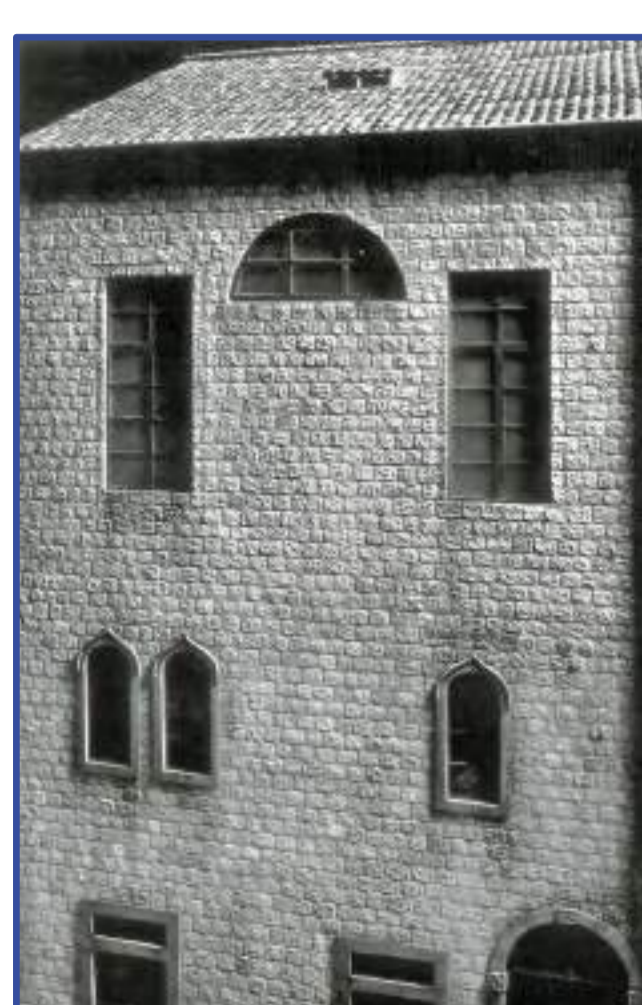


# ŽIDOVSKA POPULACIJA U HRVATSKOJ

## prije, za vrijeme i nakon Holokausta



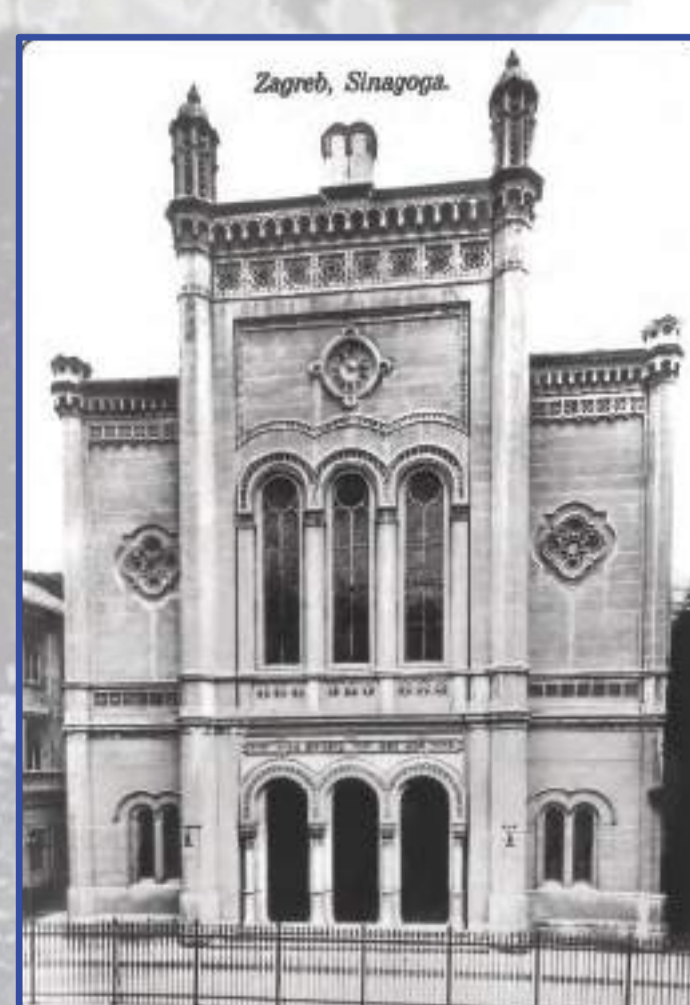
DUBROVNIK



KARLOVAC



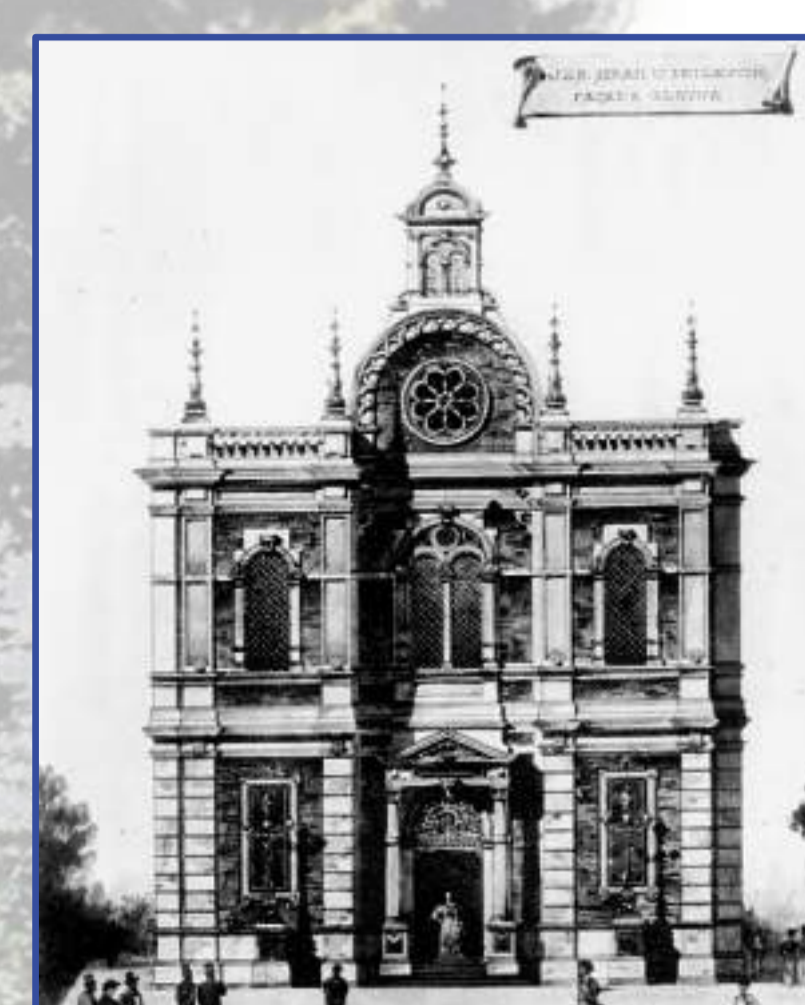
KOPRIVNICA



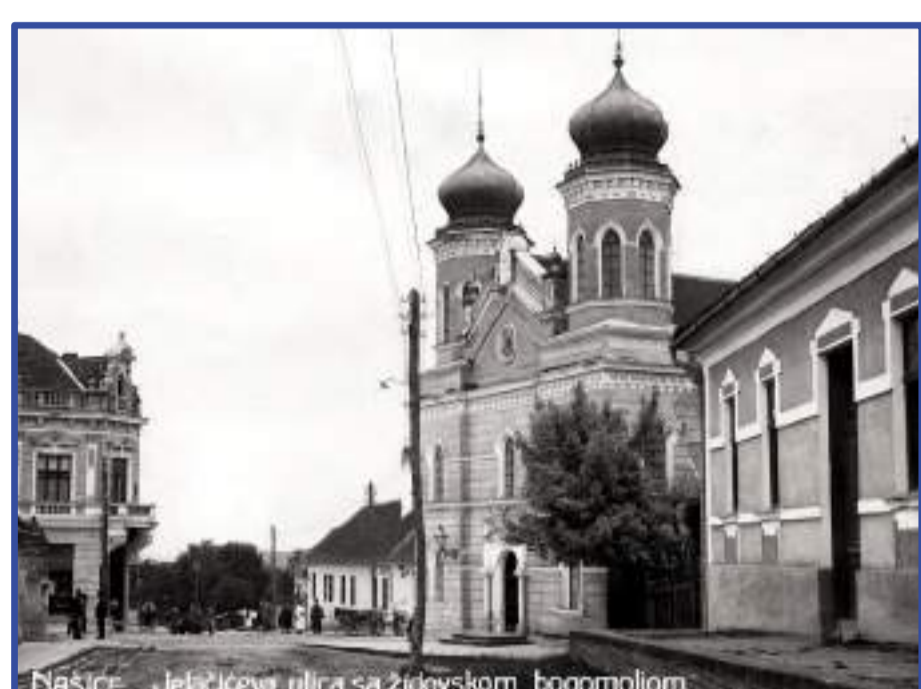
ZAGREB



VINKOVCI



KRIŽEVCI



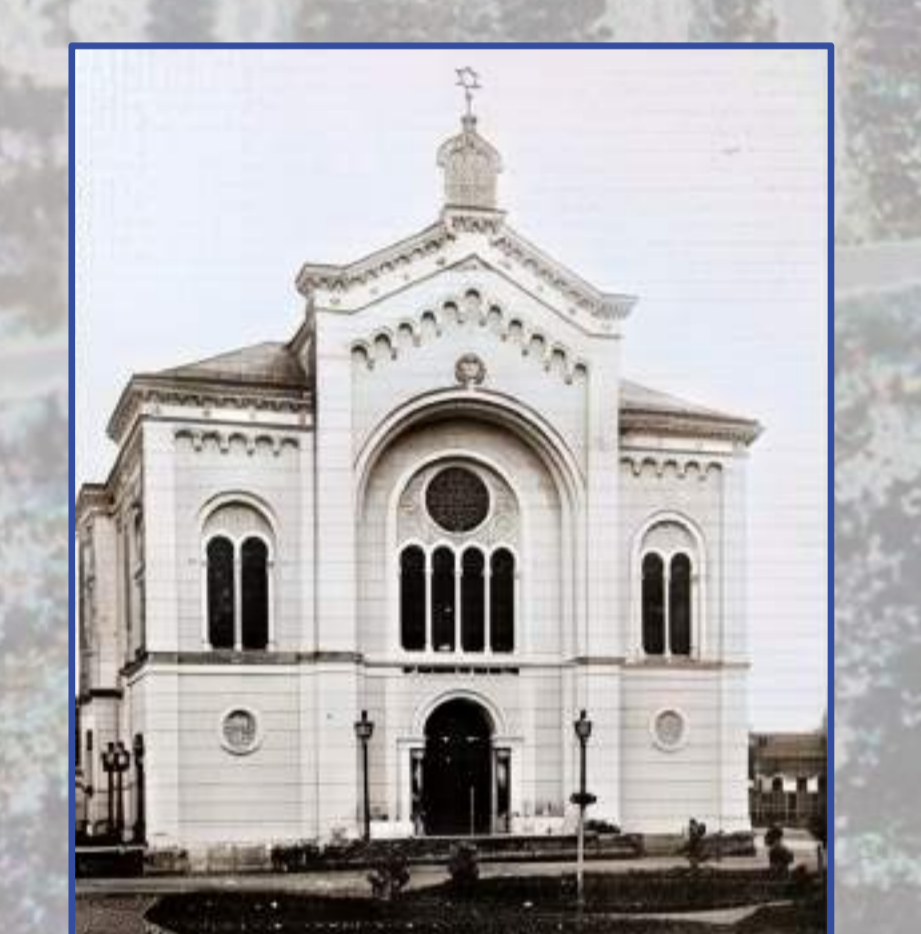
NAŠICE



VUKOVAR



SPLIT



SISAK



ORAOVICA



BROD NA SAVI



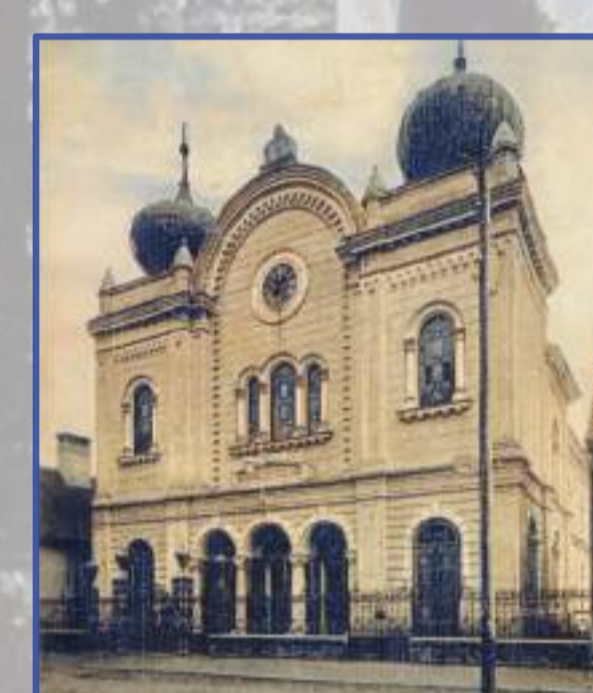
ĐAKOVO



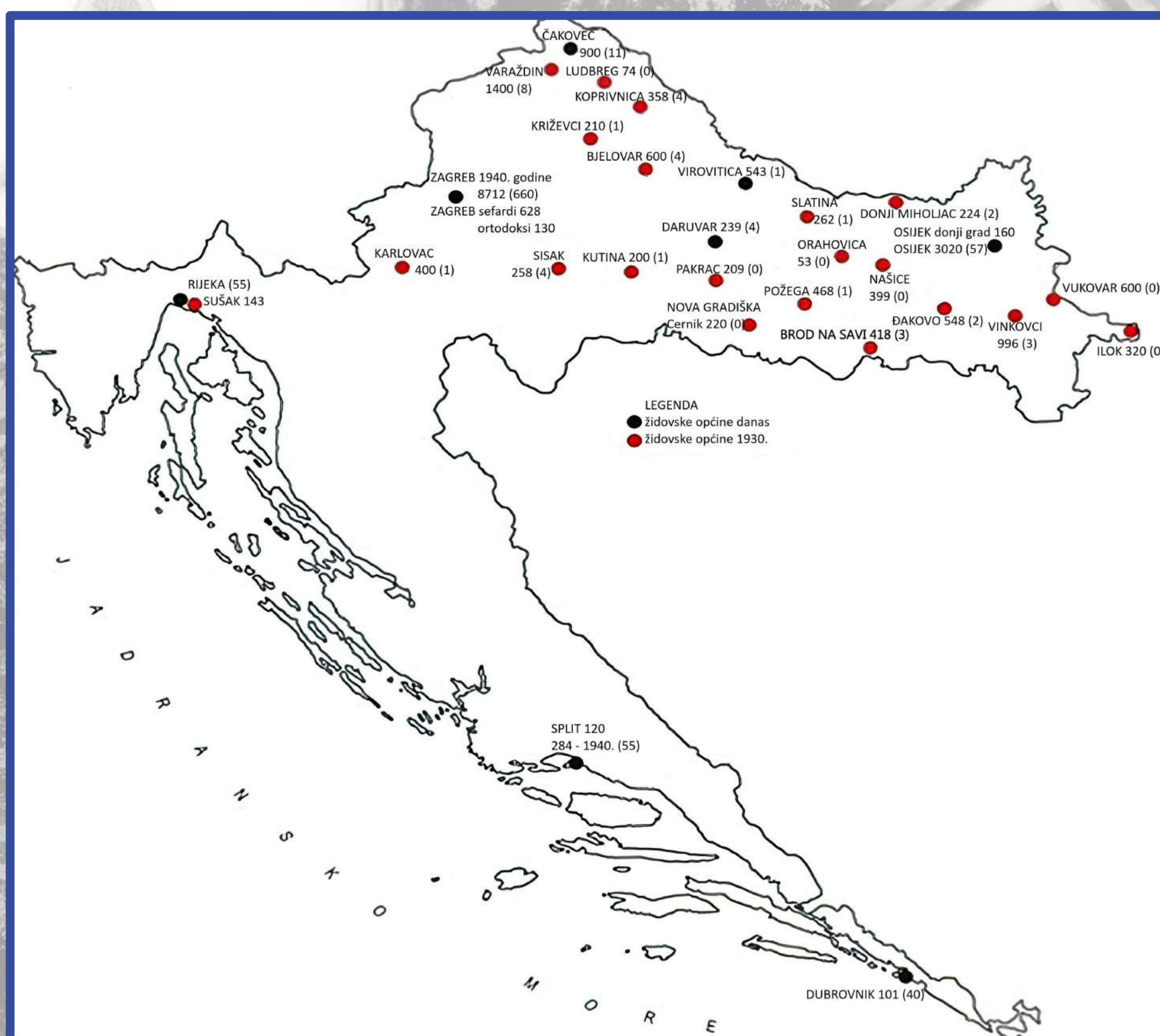
RIJEKA



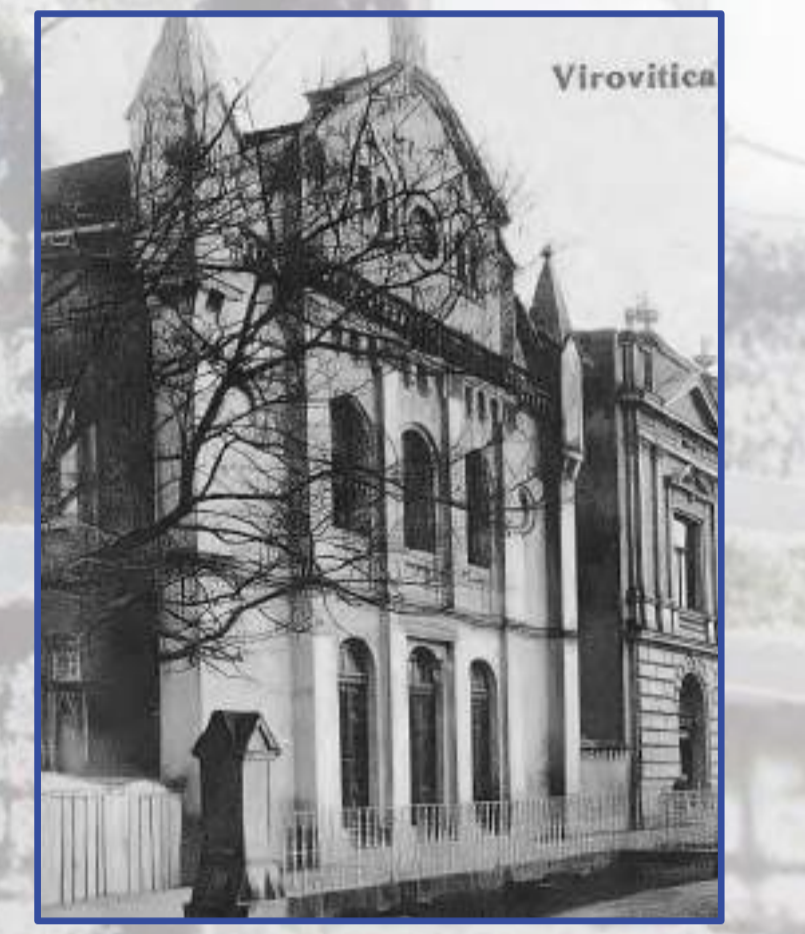
RIJEKA - ORTODOKSNA OPĆINA



VARAŽDIN



BJELOVAR



VIROVITICA



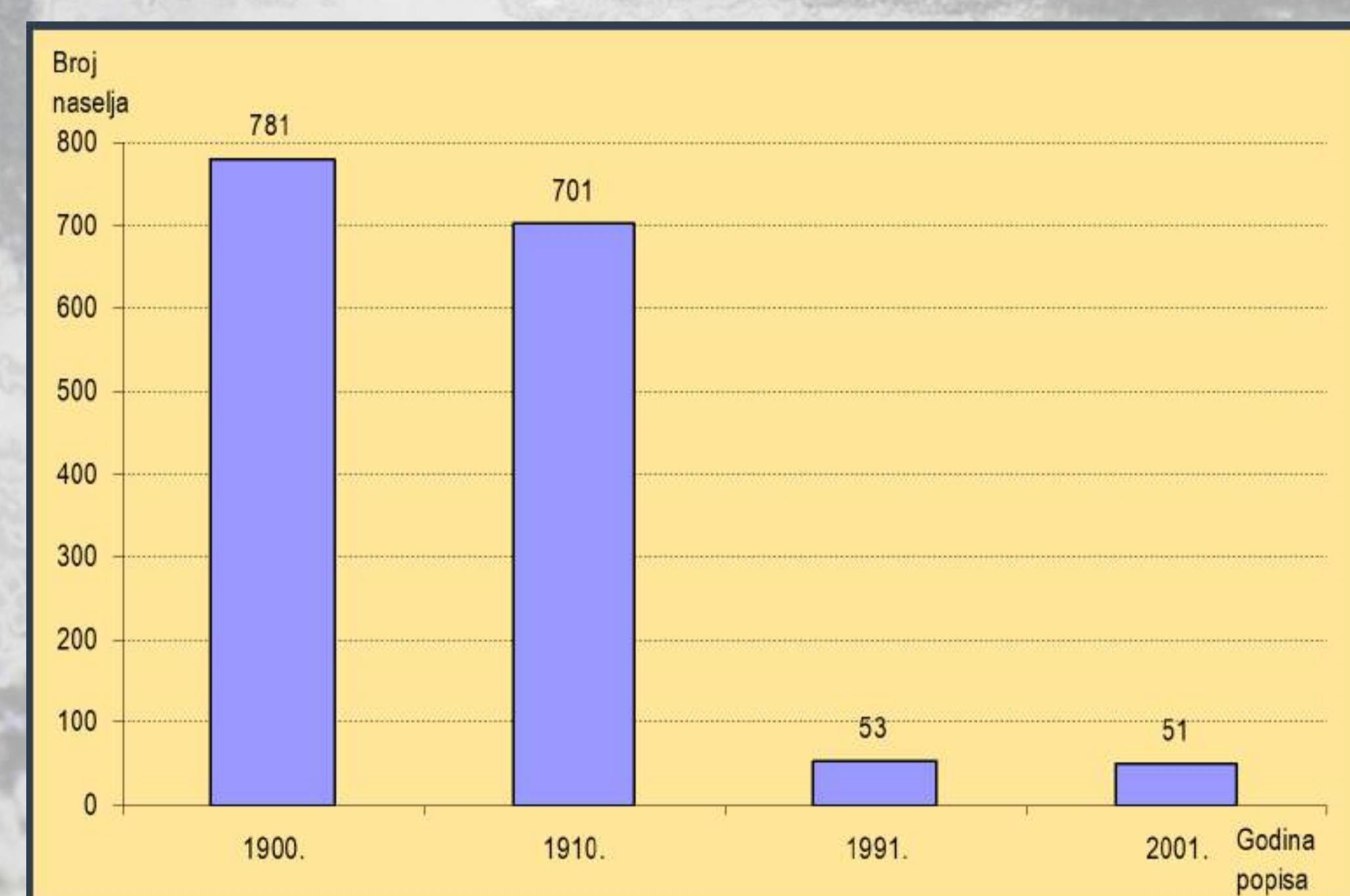
OSIJEK



PAKRAC

Grad	1900.	1910.	1921.	1931.	1991.	2001.
Vinkovci	515	613	748	647	5	4
Vukovar	513	493	456	306	6	1
Osiijek	2 094	2 340	2 731	2 445	19	24
Slavonski Brod	393	558	648	462	2	2
Nova Gradiška	143	210		207	0	0
Požega	327	327	340	248	1	0
Virovitica	228	229	278	233	2	2
Bjelovar	345	550	502	360	3	3
Koprivnica	368	447	369	339	4	8
Križevci	230	230	167	126	0	0
Varaždin	730	621	569	486	2	3
Karlovac	324	320	302	347	1	4
Sisak	373	395	331	248	2	2
Zagreb	3 261	4 275	5 970	8 702	392	368
Split	0	0	173	292	47	42
Dubrovnik	0	0	108	120	19	17
Čakovec	591	622	611	533	4	6

Kretanje broja Židova u gradovima u kojima su bile židovske zajednice prema popisima stanovništva 1900., 1910., 1921., 1931., 1991. i 2001. g.



Broj naselja u Hrvatskoj u kojima su živjeli Židovi prema popisima stanovništva 1900., 1910., 1991. i 2001. g.

Općina	Članova	Duša	Sinagoga godina izgradnje	Židovsko groblje godina izgradnje	Rabin
Bjelovar	210	600	1917.	1876.	+
Brod na Savi	177	418	1896.	1880.	+
Čakovec	211	800	1836.	1794.	+
Daruvar	106	239	1860.	1890.	+
Dubrovnik	45	101	15. stoljeće	15. stoljeće	+
Đakovo	100	548	1880.	1879.	+
Gradiška Nova	73	220	1925.	1800.	+
Ilok	50	320	1870.	1870.	+
Karlovac	137	400	1850.	1830.	+
Koprivnica	148		1875.	1842.	+
Križevci	62	210	1894.	1840.	+
Kutina	75	200	1914.	1730.	+
Ludbreg	42	74	1895.	1890.	+
Miholjac Donji	100	224	1860.	1860.	+
Našice	60	399	1896.	1865.	+
Oraštica	20	53	1911.		+
Osiijek	702	3.020	1860.	1850.	+
Osiijek - Donji grad	86	160	1903.	1860.	+
Pakrac	63	209	1875.	1875.	+
Požega	90	468	1898.	1900.	+
Rijeka-pod Italijom		143 - Sušak			
Sisak	230		1880.		+
Podravska Slatina	80	262	1896.	1858.	+
Split	50	120	1500.	1573.	+
Valpovo	85	157	1898.	1858.	
Varaždin	262	1.400	1862.	1810.	+
Vinkovci	227	995	1922.	1870.	+
Virovitica	102	643	1863.	1830.	+
Vukovar	134	600	1857.	1830.	+
Zagreb - aškenazi	2.740	12.000	1867.	1878.	+
Zagreb - sefardi	121				+
Zagreb - ortodoksi	130				

Židovske općine 1930. g. prema registru rabina